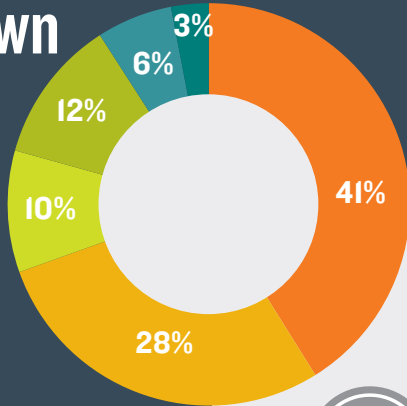




Victorian State Budget 2015-16

Taxation Revenue Breakdown 2015-16

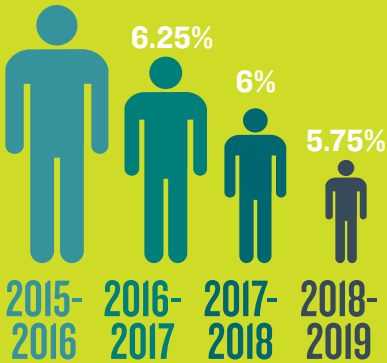
- Property related
- Payroll tax
- Gambling
- Motor vehicle
- Insurance
- Misc



3% Stamp Duty Surcharge for Foreign Investors

Forecast Unemployment Rate

6.50%



\$5.8b
worth of surpluses over the next 4 years

INFRASTRUCTURE

\$1.5b initial spending on Metro Rail

\$1.3b for new trains, upgrades and maintenance

MAJOR INITIATIVES

\$688m to build new schools and modernise and regenerate school facilities

\$150m to support people with disabilities, their families and carers

\$100m to upgrade Flinders Street Station

\$200m for a new Western Women's & Children's hospital

\$300m TAFE Rescue Fund

\$148m for new custody offices at police stations

\$250m for child protection and family service system

\$445m for new E-Class trams